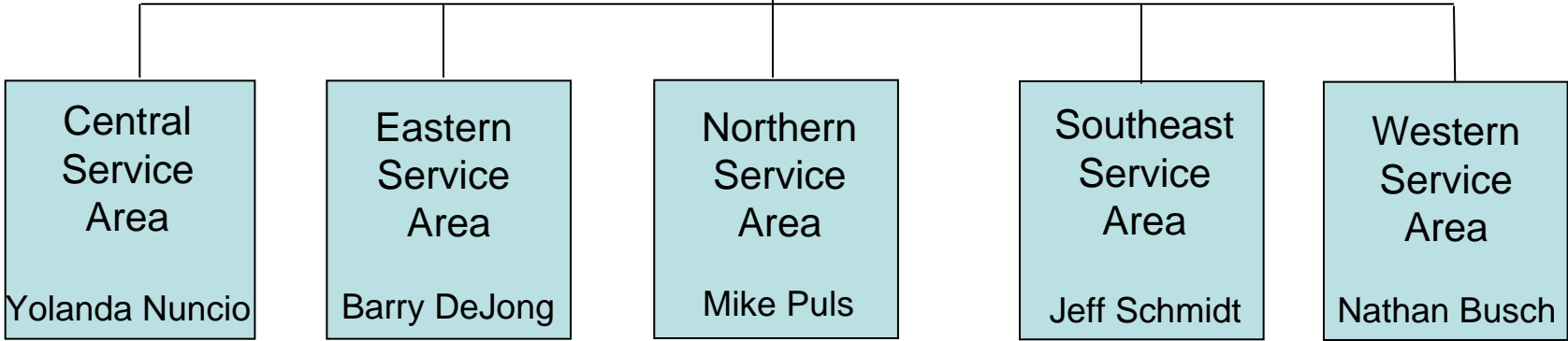


Gubernatorial Appointee   
Director Appointees

**Division of Children & Family Services**  
Todd Reckling  
Director

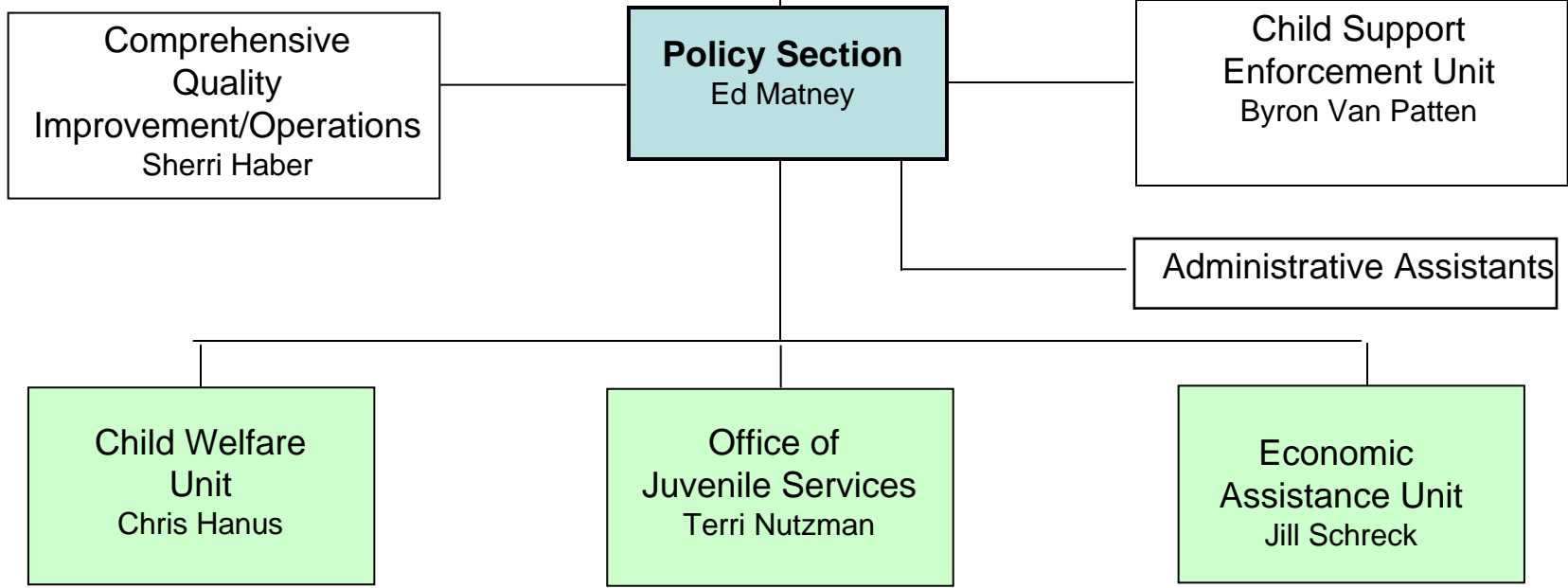


Gubernatorial Appointee   
Director Appointees

- Quality Assurance
- Contact Monitoring
- Data Analysis//Reporting
- Utilization/Capacity Management
- Audits
- Case Reviews
- Federal/State Compliance Reviews

**Division of Children & Family Services**  
**Todd Reckling**  
**Director**

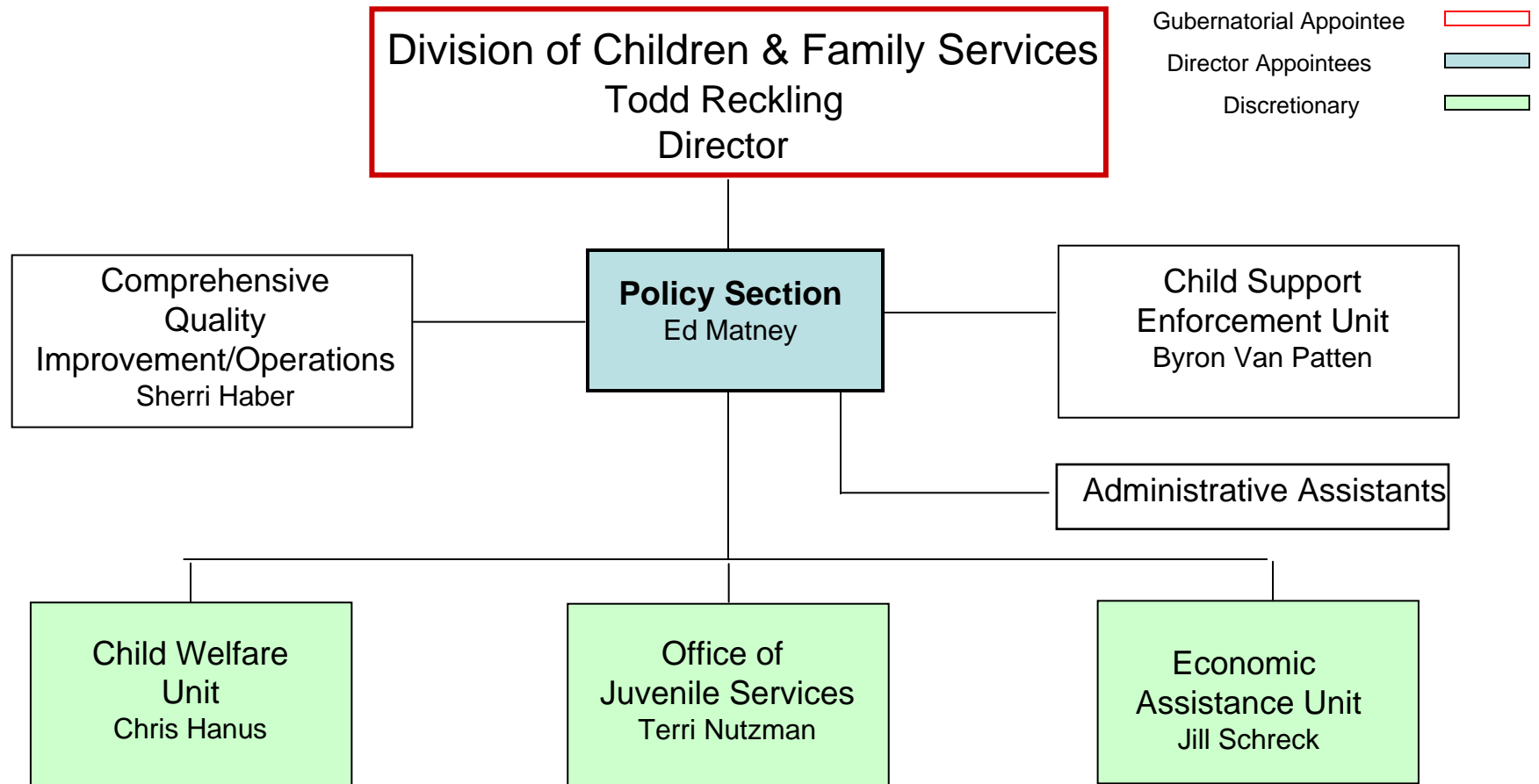
- Gubernatorial Appointee
- Director Appointees
- Discretionary



- Foster Care
- Adoption/Guardianship
- Central Register/Policy-CPS & APS
- Employment Checks
- Expungements
- ICPC
- Family Preservation
- Transitional Youth Services
- IV-E
- Domestic Violence
- ICWA
- Social Service Block Grant for Families

- YRTC Operation
- Parole/Direct Commit
- ICJ
- Detention billings
- YLS/CMI

- Economic Assistance
- Food Stamps
- Food Distribution
- ADC
- Employment First
- AABD
- LIHEAP
- Service Area Policy Support
- N-FOCUS Business Support



Duties of all Policy Staff:

- Consultation with the Field
- Policy Development/Implementation
- Program Development/Management
- Implementation & Monitoring of Improvement/
  - Corrective Action Plans
- Technical Assistance
- Liaison with Federal and State Representatives

# Division of Children & Family Services

Todd Reckling  
Director

Gubernatorial Appointee   
Director Appointees   
Discretionary

**Policy Section**  
Ed Matney

**Child Welfare Unit**  
Chris Hanus

**Child &  
Adult Abuse/  
Neglect**  
Lori Harder

- Hotline (Centralized)
- Expungements
- CR Employment checks
- Domestic Violence
- CAPTA
- CJA
- Child Protective Services
- Adult Protective Services

**Foster Care/  
Adoption**  
Margaret Bitz

- Foster Care
- Adoption/Guardianship
- Subsidies
- ICPC
- IV-E
- Websites/Exchanges
- Adoptive Tech
- Adoption Consortium

**Family  
Preservation  
& Independent/  
Transitional Living**  
Vacant

- Service Array Implementation
- Non-Court Youth/Families
- In-home Services
- Medical
- Mental /Behavioral Health
- Aftercare
- Prevention/Early Intervention
- Former Ward
- ETV
- Records
- Gov's Youth Councils
- Positive YD
- Transition Services

**Child Care/NHAP/  
Refugee Program/  
CSBG**  
Vacant

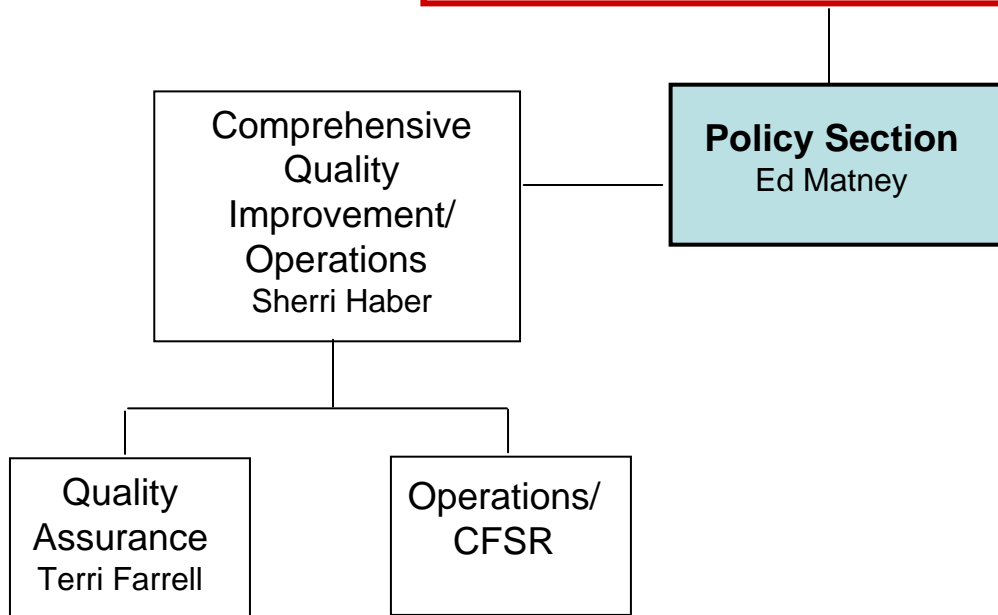
- Child Care Subsidy
- Inter-agency Coordination
- State-wide coordination of Homeless activities
- Process grants statewide/ coordination of Refugee activities
- Policy Support
- CSBG oversight of Community agencies
- Social Services Block Grant for Families

**Indian Child  
Welfare Act/  
Tribal Liaison**  
Sherri Eveleth  
Program Specialist

- ICWA
- Tribal contracts for CPS
- Training

**Division of Children & Family Services**  
 Todd Reckling  
 Director

Gubernatorial Appointee   
 Director Appointees   
 Discretionary



- QA in Service Areas
- Contract Monitoring
- Data Analysis/Reporting
- Accuracy Reviews
- Improvement/Corrective Action Plans
- Utilization/Capacity Management
- Case Reviews
- Process Reviews
- Compliance Reviews

- Contracts
- Audits
- Budget
- N-FOCUS/CHARTS
- Fed/State Reports
- Child and Family Service Review (CFSR)
- Program Improvement Plan (PIP)
- Policy Management
- Training
- Grant Management

**Division of Children & Family Services**  
**Todd Reckling**  
**Director**

Gubernatorial Appointee   
 Director Appointees   
 Discretionary

**Policy Section**  
 Ed Matney

**Office of  
 Juvenile Services**  
 Terri Nutzman

**Youth Rehabilitation &  
 Treatment Centers (YRTCs)**  
 Geneva  
 Dan Scarborough  
 Kearney  
 Jana Peterson

- YRTC Geneva & Kearney Operations
- AR's & OM's
- Contracts for Services
- Programming
- Discipline
- Grievances
- ACA Accreditation
- PbS Monitoring
- Monitoring Releases
- Review/Monitoring Physical Interventions
- Maintenance/Renovation of structures - monitoring

**Parole/Direct  
 Commitments**

- Community re-entry from YRTC's
- Triage Center/Crisis/Re-entry evaluations
- Revocation of Parole
- ICJ
- Detention Billing
- Community-Based programs
- Graduated Sanctions

**Division of Children & Family Services**  
**Todd Reckling**  
**Director**

Gubernatorial Appointee   
 Director Appointees   
 Discretionary

**Policy Section**  
 Ed Matney

**Support Staff**  
 Juanita Ewers  
 Roxie McCormick

**Economic Assistance Unit**  
 Jill Schreck

**Data Imaging/  
 On-Line  
 Application**  
 Deb Steidley

**Public Assistance**  
 Vacant

**Food Stamps & TANF**  
 Vacant

**N-FOCUS Business**  
 Claire Speedlin

**Food Distribution**  
 Julia West

- AABD Eligibility/Policy Support
- Low Income Energy
- Service Area Policy Support
- Corrective Action
- Processing Medicaid Applications for:
  - New Applicants
  - Regional Office Releases
  - Corrections Releases
  - Women Cancer Program
- Medicare Part D Assistance
- TMA Premiums
- Process all new Kids Connect applications for Omaha/Lincoln

- Food Stamp Program Eligibility/Policy Support
- ADC Eligibility/Policy Support
- Employment First Policy Support
- Employment & Training (FSP)
- Policy Support
- Facilitates CA Meetings w/SA

- Data Imaging and On-line Application
- Initiate new N-FOCUS Automation Initiatives
- Support Policy Teams

- Carrier Contracts
- Warehouse Contracts
- Food Processing contracts
- Commodity Delivery to 500 entities
- TEFAP Program

**Division of Children & Family Services**  
Todd Reckling  
Director

Gubernatorial Appointee   
Director Appointees   
Discretionary

**Policy Section**  
Ed Matney

**Economic Assistance Unit**  
Jill Schreck

**Public Assistance**  
Vacant

**Support Staff**  
Anita Wood

- Low Income Home Energy Assistance Program (LIHEAP)
- Service Area Policy Support

- AABD
- Service Area Policy Support
- Corrective Action//Audits

- Processing Medicaid Applications for:
  - New Applicants
  - Regional Office Releases
  - Corrections Releases
  - Women's Cancer Program
- Medicare Part D Assistance
- TMA Premiums
- Process all new Kids Connect applications for Omaha/Lincoln

**Division of Children & Family Services**  
Todd Reckling  
Director

Gubernatorial Appointee   
Director Appointees   
Discretionary

**Policy Section**  
Ed Matney

**Economic Assistance Unit**  
Jill Schreck

**Food Stamp/TANF Programs**  
Vacant

- ADC Eligibility
- Policy Support

- Employment First
- Policy Corrective Action

- Food Stamp Eligibility & Policy Support
- FSP Employment Training
- Corrective Action
- Corrective Action Meetings w/Service Area Staff

**Division of Children & Family Services**  
Todd Reckling  
Director

Gubernatorial Appointee   
Director Appointees   
Discretionary

**Policy Section**  
Ed Matney

**Economic Assistance Unit**  
Jill Schreck

**Food Distribution Program**  
Julia West

- Food Processing Contracts
- Carrier Contracts
- Warehouse Contracts
- Commodity Delivery
- Emergency Food Assistance Program

**Division of Children & Family Services**  
Todd Reckling  
Director

Gubernatorial Appointee   
Director Appointees   
Discretionary

**Policy Section**  
Ed Matney

**Economic Assistance Unit**  
Jill Schreck

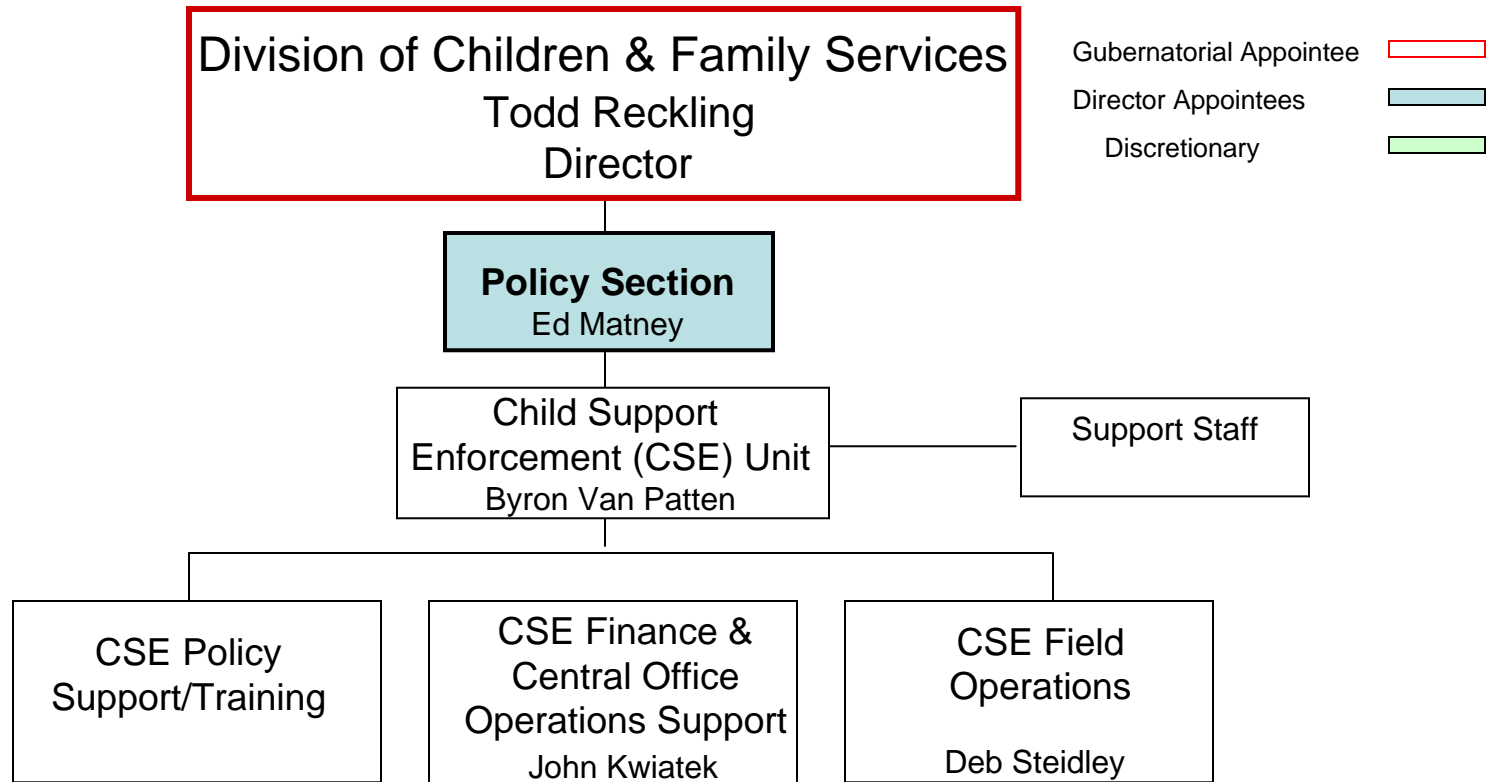
\*Deb Steidley

**N-FOCUS**  
Business Support  
\*Claire Speedlin

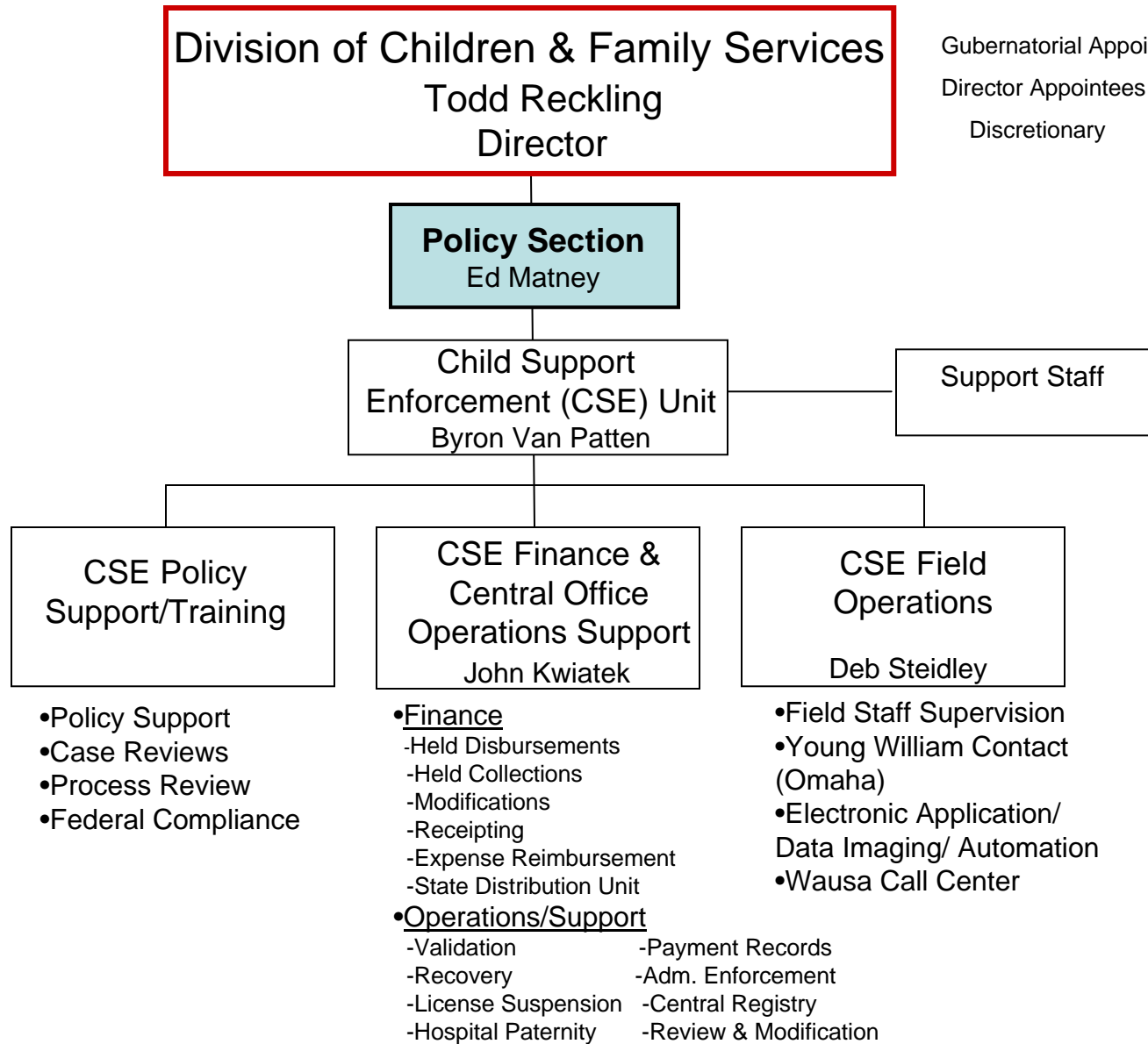
Electronic  
Application/Data  
Imaging and New  
Automation

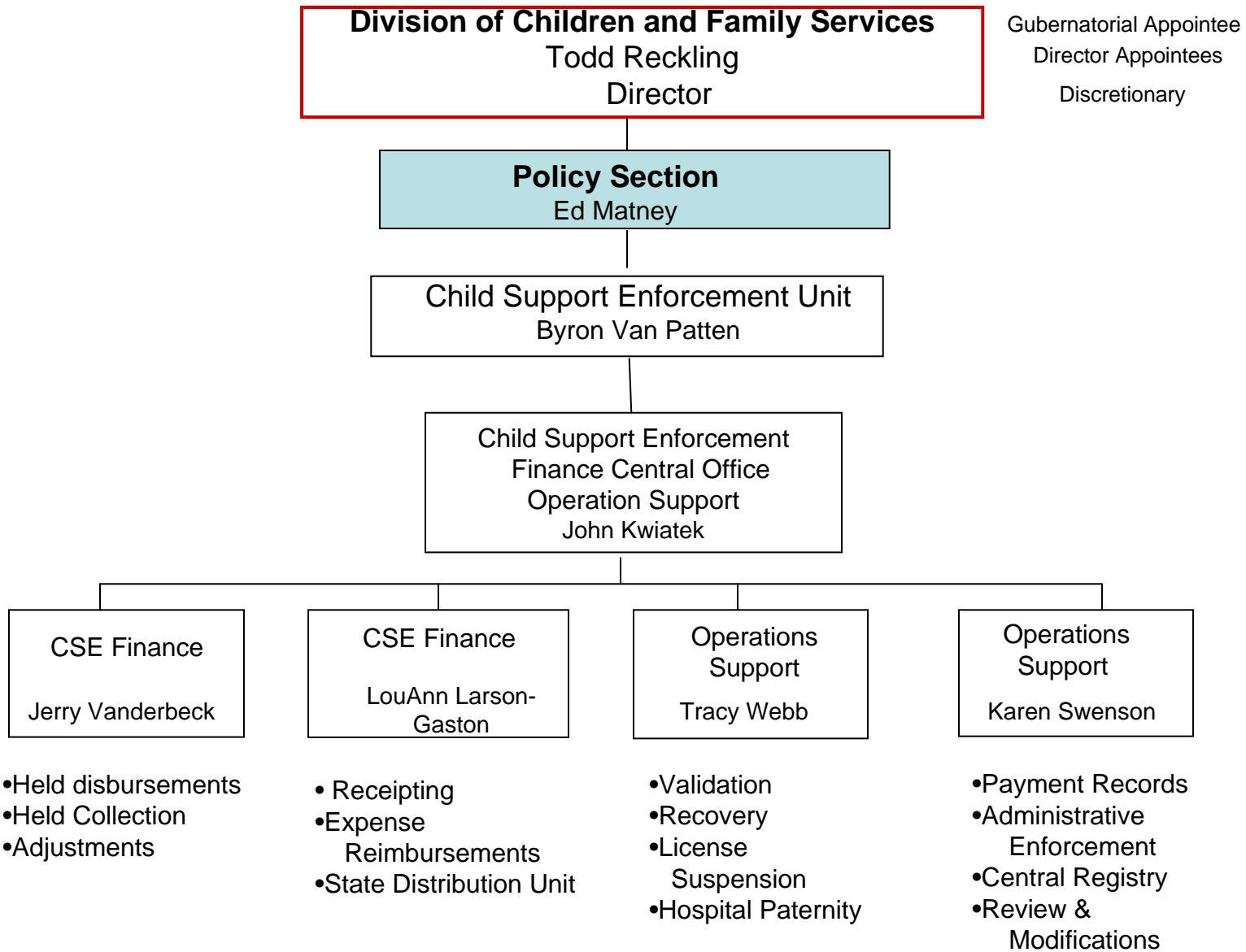
- Electronic Application
- Data imaging
- Policy Support

\*Data Imaging, On-Line  
Application and Automation Team



- CSE Finance
- CSE Policy
- CSE Field Operations
- Paternity Establishment
- Court Order Establishment
- Current Collection of Support
- Collection of Arrears
- Federal Compliance Reviews





**Division of Children and Family Services**  
Todd Reckling  
Director

Gubernatorial Appointee   
Director Appointees   
Discretionary

**Policy Section**  
Ed Matney

**Child Support Enforcement Unit**  
Byron Van Patten

Child Support Enforcement  
Finance Central Office  
Operation Support  
John Kwiatek

Child Support Enforcement  
Field Supervision/Operations  
Support  
Deb Steidley

